

# EWFM

## Tank Seal TB5 - External Tank Seal - Storage Tank Seals

### GENERAL INFORMATION

The Tubeseal, is a liquid filled product, normally with water, kerosene or others. The seal design has been used on tanks with different diameters, containing the full range of Crude and Refined products.

### DESIGN FEATURURES

The Tube Seal design has a separate Scuffband and Tube. The Scuffband is designed with a ribbed surface and is produced in nylon fabric coated with a hardwearing elastomeric material to withstand contact with the roughest tank shell. The seal Tube can be varied in sizes from 250 mm. to 350 mm. depending of the tank size and nominal rim space.

The Tubeseal is normally manufactured in one continuous length but can be supplied in separate sections. The seal Tube is held between the Scuffband and the roof rim is filled with liquid, normally kerosene or gas oil.

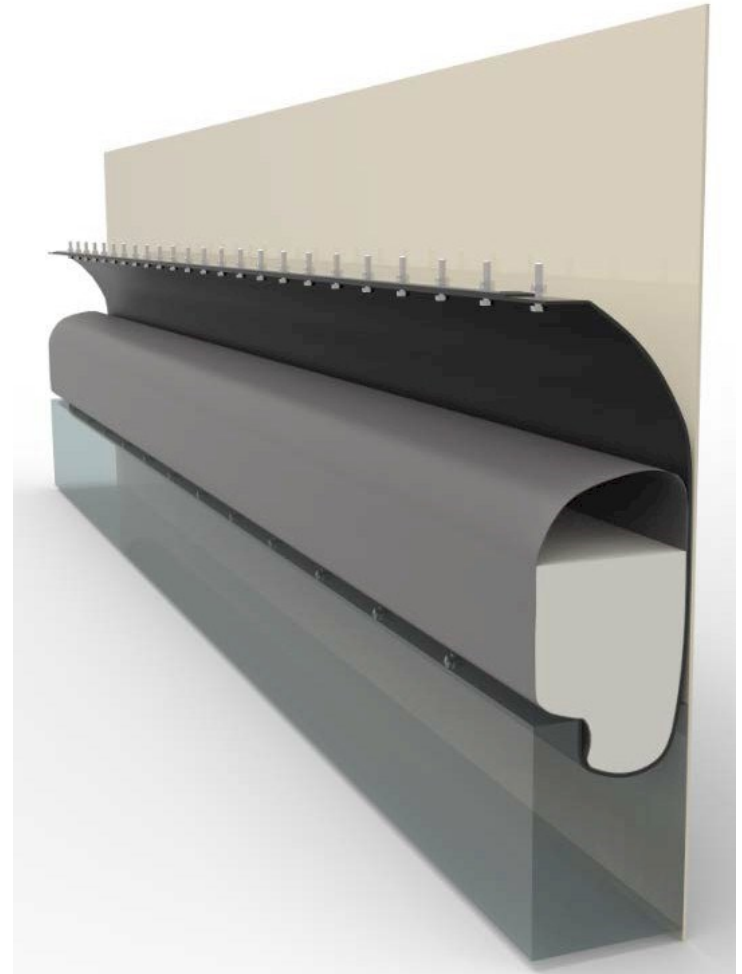
The liquid filled Tube forces the Scuffband against the tank shell, maintaining a firm contact approximately 200 mm. deep when the tank is in service.

As the Tubeseal is product mounted – i.e. installed in contact with the stored liquid, the sealing efficiency is very high.

### ACCESSORIES

Secondary Seals: All the Secondary Seal designs can be used with the Tubeseal replacing the weather shields shown.

Wax scraper: A wax scraper system can be fixed below the roof to remove wax deposits from the tank shell when waxy crude oils are being stored



### TECHNICAL DATA

**Rim space:** 200 mm  $\pm$  100 mm (standard)

**Aromatic resistance:** 75% (with special materials available to give service in 100% products).

### MATERIAL SPECIFICATION

- **Fabric reference:** Nylon fabric covered with a nitrile-PVC elastomer.
- **Scuffband:** 4,5 mm minimum
- **Tube:** 1,5 mm minimum
- **Full seal weight:** 10 kg per lineal meter.
- **Estimated lifespan:** 10 - 20 years.