

# Accessories

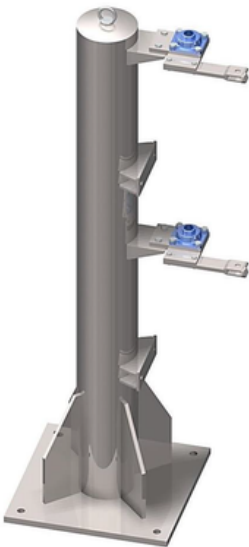
## Model 2453 Closed System Flexible Hose

This can be used for top filling of closed vessels with vapour recovery line.



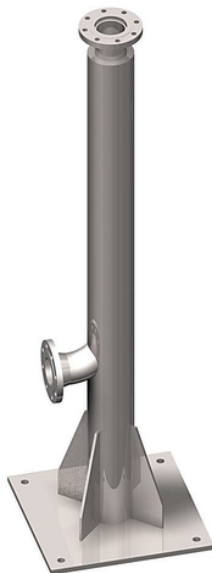
## Support Units for Loading Arms

### Model 4928-A/B support units for long range Loading Arms



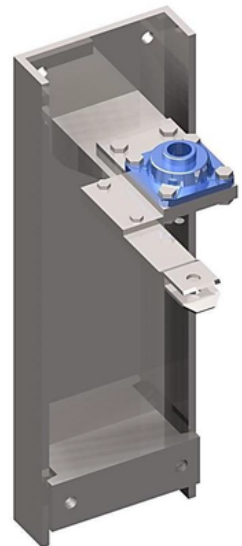
This stand post is recommended for use when loaders are installed on a gantry without any other available support structure. It is available in various heights and can support up to two loaders.

### Model 4929 / 4930 support units for single range Loading Arms



This stand post supports a single Loading Arm and is equipped with an internal line for the product, featuring an inlet and an outlet flange (inlet on one side, outlet on the top). It is recommended for fixed-range Loading Arms. Available in various heights, it is designed to accommodate only one loader.

### Support units for long range Loading Arms – Wall fixing plate



The fixing plate is recommended for installing loaders on a wall or gantry structures. It is available in various heights and can accommodate a maximum of 2 loaders.