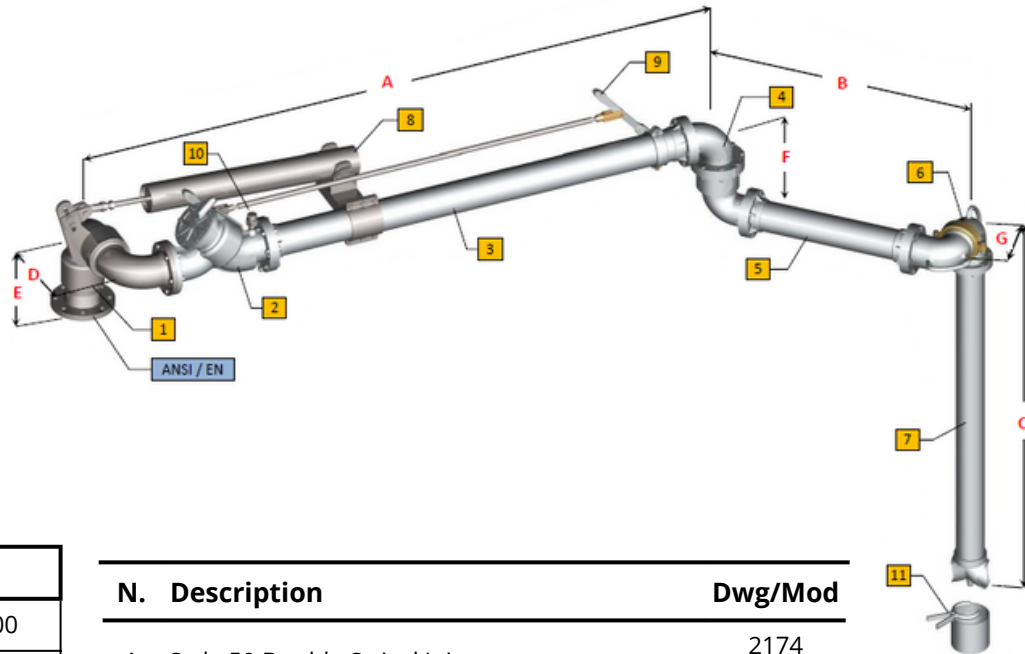


Variable Top Loading Arm - Model 621-BC/721-BC

Operating Conditions

Design Pressure	10.0 Bar G
Test Pressure	15.0 Bar G
Design Temperature	-15°C / +65°C
Seal Material	VITON Nitrile (BUNA N) Special VITON (***)
Flow Rate	3"- 75 mc/h Max 4"- 125mc/h Max

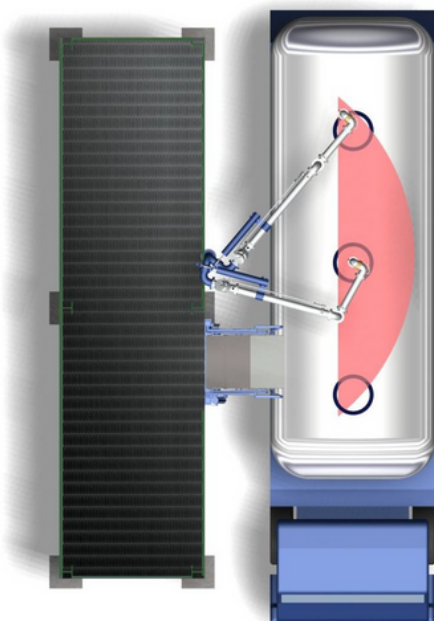


Standard Dimensions

Dn.	3"	4"
A	2100/2800	2100/2800
B	600/1000	600/1000
C	1200/2000	1200/2000
D	296	353
E	289	328
F	238	205
G	174	201
Weight	90	115

N.	Description	Dwg/Mod
1	Style 50 Double Swivel Joint	2174 2004 (*)
2	Loading Valve (Stay/Hold-Open)	504
3	Tube Assembly	-
4	Intermediate Swivel	C-3443(**)
5	Secondary Tube Assembly	-
6	Drop Tube Swivel	536
7	Drop Tube with "T" Deflector	2359-T
8	Spring Balancing Cylinder	05182
9	Valve Remote Control	2356
10	3/8" NPT Vacuum Breaker	2336
11	Nipper Drip Bucket	2408

Demonstration of operating area



Notes:

- Earthing continuity along the arm, according to ATEX directive
- (**) Horizontal or 10° sloped construction, for improve the drainage of the product from the tube.
- (*) Model 2174 Swivels installed on Model 621-BC Loading Arms
- (*) Model 2004 Swivels installed on Model 721-BC Loading Arms

Options:

- Pos.7 with flute beak end (2359-BF)
- Pos.7 with flow deflector (2359-D)
- Microswitch to signal valve opened/closed
- Rotational microswitches to signal arm side in use
- (***) Suitable for BIO-Products
- NDT test (RT-PT-MT) available on request