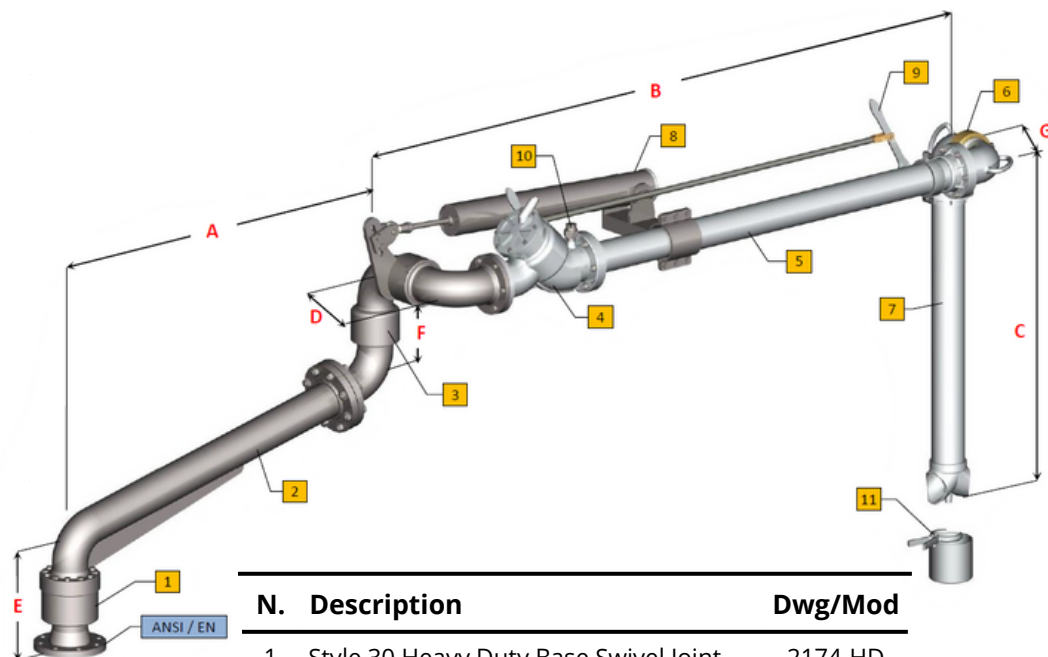


# Long Range Top Loading Arm with Sloped Unsupported Boom - Model 2633

## Operating Conditions

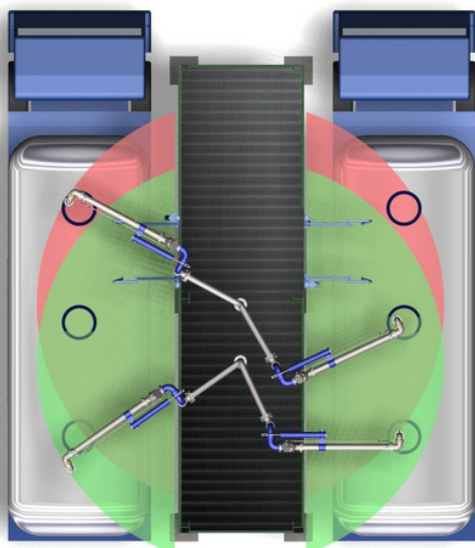
Design Pressure	10.0 Bar G
Test Pressure	15.0 Bar G
Design Temperature	-15°C / +65°C
Seal Material	VITON Nitrile (BUNA N) Special VITON (*)
Flow Rate	3"- 75 mc/h Max 4"- 125mc/h Max



## Standard Dimensions

Dn.	3"	4"
<b>A</b>	1500/2500	1500/2500
<b>B</b>	2000/3000	2000/3000
<b>C</b>	1600	1600
<b>D</b>	296	353
<b>E</b>	318	375
<b>F</b>	296	353
<b>G</b>	174	201
<b>Weight</b>	125	165

## Demonstration of operating area



## N. Description

## Dwg/Mod

1	Style 30 Heavy Duty Base Swivel Joint	2174-HD
2	Sloped Boom Assembly	-
3	Style 70 Double Swivel Joint	2174
4	Loading Valve (Stay/Hold-Open)	504
5	Primary Arm	-
6	Drop Tube Swivel	536
7	Drop Tube with "T" Deflector	2359-T
8	Spring Balancing Cylinder	05182
9	Valve Remote Control	2356
10	3/8" NPT Vacuum Breaker	2336
11	Nipper Drip Bucket	2408

## Notes:

- Earthing continuity along the arm, according to ATEX directive

## Options:

- Pos.7 with flute beak end (2359-BF)
- Pos.7 with flow deflector (2359-D)
- Microswitch to signal valve opened/closed
- Rotational microswitches to signal arm side in use
- Locking device for arm in parking position
- (\*) Suitable for BIO-Products
- Overfill level sensor
- NDT test (RT-PT-MT) available on request