

# Triple Range Bottom Unloading Arm Electrically Heated - Model 2454-BC-TRC

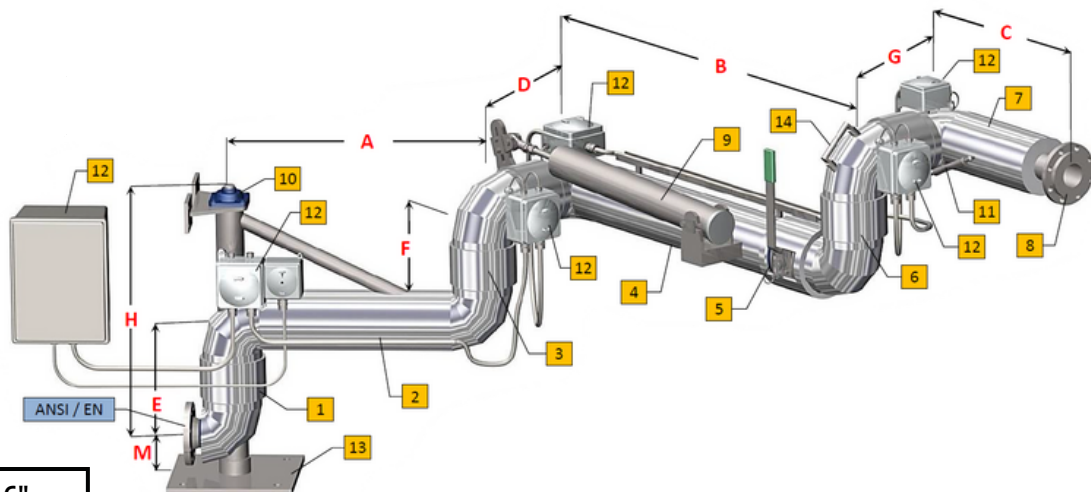
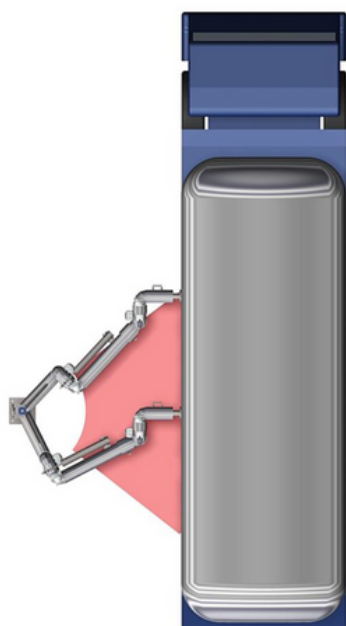
## Operating Conditions

Design Pressure	5.0 Bar G
Test Pressure	7.5 Bar G
Design Temperature	-15°C / +200°C
Seal Material	PTFE

## Standard Dimensions

Dn.	3"	4"	6"
<b>A</b>	1000/1500	1000/1500	1000/1500
<b>B</b>	1500/2000	1500/2000	1500/2000
<b>C</b>	650	750	800
<b>D</b>	312	375	524
<b>E</b>	312	375	524
<b>F</b>	312	375	524
<b>G</b>	312	375	524
<b>H</b>	700	800	1000
<b>L</b>	312	375	524
<b>M</b>	150	150	200
<b>Weight</b>	300	400	520

## Demonstration of operating area



N.	Description	Dwg/Mod
1	Style 40 Base Swivel Joint	2833
2	Boom Assembly	-
3	Style 70 Double Swivel Joint	2833
4	Primary Arm	-
5	Ball Valve with Locking Device in Closed Pos.	-
6	Style 70 Swivel Joint	2175 - 2833
7	Final Arm	-
8	Loose Flange	-
9	Spring Balancing Cylinder	05182
10	Pillow Block	C-4354
11	Gas Spring Balancer	-
12	EEx-d Box for Heating System	-
13	Base Support	-
14	Handle	-

## Options:

- Insulation up to the final arm
- Locking device arm in parking position
- Stand Post
- NDT test (RT-PT-MT) available on request

## Notes:

- Earthing continuity along the arm, according to ATEX directive