

Long Range Top Loading Arm for Food Service - Model 2385-LR

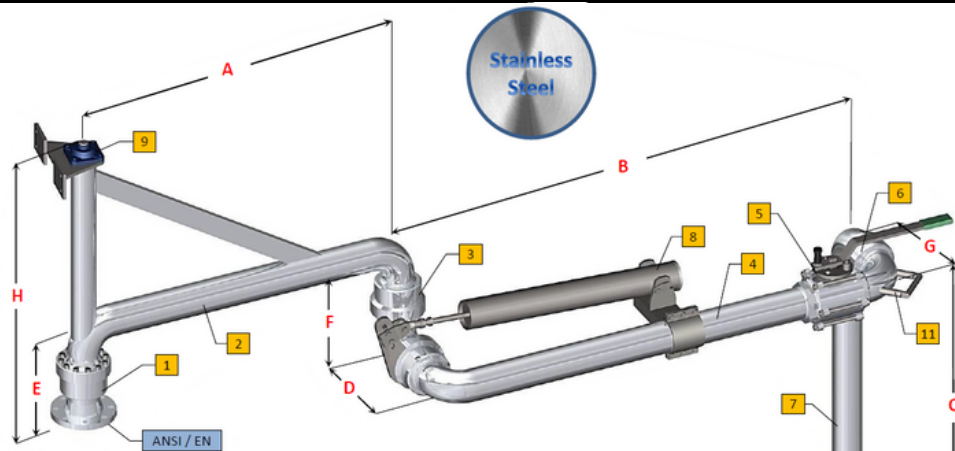
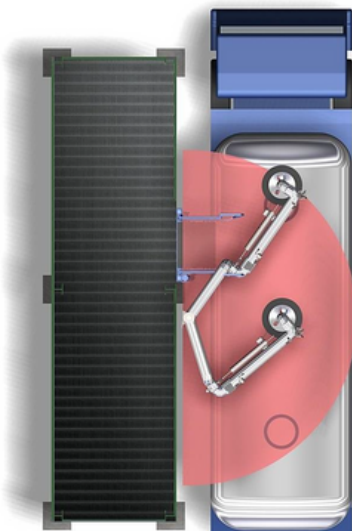
Operating Conditions

Design Pressure	10.0 Bar G
Test Pressure	15.0 Bar G
Design Temperature	-15°C / +16°C
Seal Material	PTFE (FDA Approved)
Flow Rate	2" - 35 mc/h Max 3" - 75 mc/h Max 4" - 125 mc/h Max

Standard Dimensions

Dn.	2"	3"	4"
A	1500	1500	1500
B	2000	2000	2000
C	1600	1600	1600
D	310	347	424
E	273	303	348
F	285	309	373
G	257	279	343
H	1000	1000	1000
Weight	110	170	250

Demonstration of operating area



N. Description

Dwg/Mod

N.	Description	Dwg/Mod
1	Style 30 Base Swivel Joint	2833/SS-2815-3885
2	Boom Assembly	-
3	Style 70 Double Swivel Joint	2833/SS-2815-3885
4	Primary Arm	-
5	Fire Safe (Full Bore) Ball Valve	-
6	Style 40 Swivel Joint	2175-2833/SS-2815-3885
7	Drop Tube with "T" Deflector	2359-T
8	Spring Balancing Cylinder	05182
9	Pillow Block	C-4354
10	Nipper Drip Bucket	2408
11	Handle	-

Options:

- Pos.7 with flute beak end (2359-BF)
- Microswitch to signal valve opened/closed
- Ball valve installed at the beginning of the primary arm, with remote control and vacuum breaker
- Overfill level sensor installed on positional spider
- Locking device arm turned in parking position
- Polished internal surfaces on request
- NDT test (RT-PT-MT) available on request

Notes:

- Earthing continuity along the arm, according to ATEX directive
- Model 2833/SS swivels AISI 316-L total construction
- Model 3885 swivels AISI 316-L total construction
- Model 2815 swivels with AISI 316-L internal parts and sealing surfaces and carbon steel supporting parts