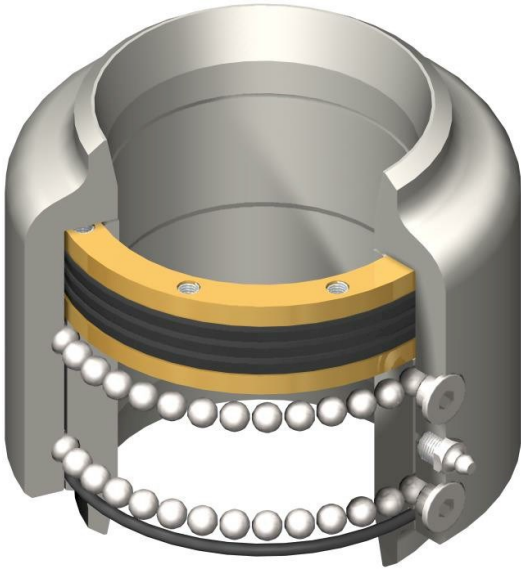


EWFM

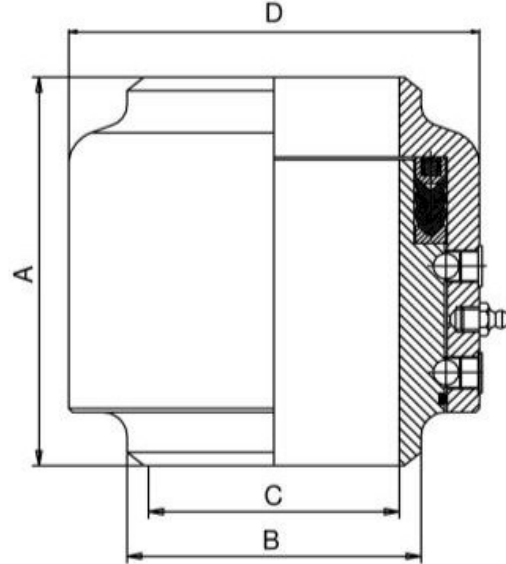
Swivel Joint - Model 2174 - Carbon Steel



STANDARD FEATURES:

- 2 Pieces design
- Hardened and grinded raceways
- Triple "V" ring seals
- High loading capacity
- Easy swiveling

Primary Dimensions



| Size | A | B | C | D | Kg | Design Pressure |
|------|-------|-------|------|-----|------|-----------------|
| 1" | 96.5 | 33.4 | 26.5 | 62 | 2.1 | 40 Bar G |
| 1.5" | 115 | 48.3 | 40 | 85 | 2.7 | 40 Bar G |
| 2" | 115 | 60.3 | 51 | 94 | 3.2 | 40 Bar G |
| 2.5" | 125 | 73 | 63 | 113 | 5.2 | 40 Bar G |
| 3" | 139.5 | 88.9 | 78 | 124 | 6 | 40 Bar G |
| 4" | 146 | 114.3 | 102 | 156 | 9.8 | 40 Bar G |
| 6" | 216.5 | 168.3 | 152 | 225 | 26.6 | 40 Bar G |

Exploded view of the Model 2715

Part List

| Item | Description | Qty | Material |
|------|----------------|-----|------------------|
| 1 | Body | 1 | Carbon Steel |
| 2 | Sleeve | 1 | Carbon Steel |
| 3 | Ball Plugs | 2 | AISI 303 |
| 4 | Balls | | Carbon Steel |
| 5 | Grease Nipple | 1 | Carbon Steel |
| 6 | "V" ring seals | 3 | BUNA N/Viton |
| 7 | Female adapter | 1 | Bronze/Aluminium |
| 8 | Spring adapter | 1 | Bronze/Aluminium |
| 9 | Springs | | Inox |
| 10 | Grease O'Ring | 1 | BUNA N/Viton |

