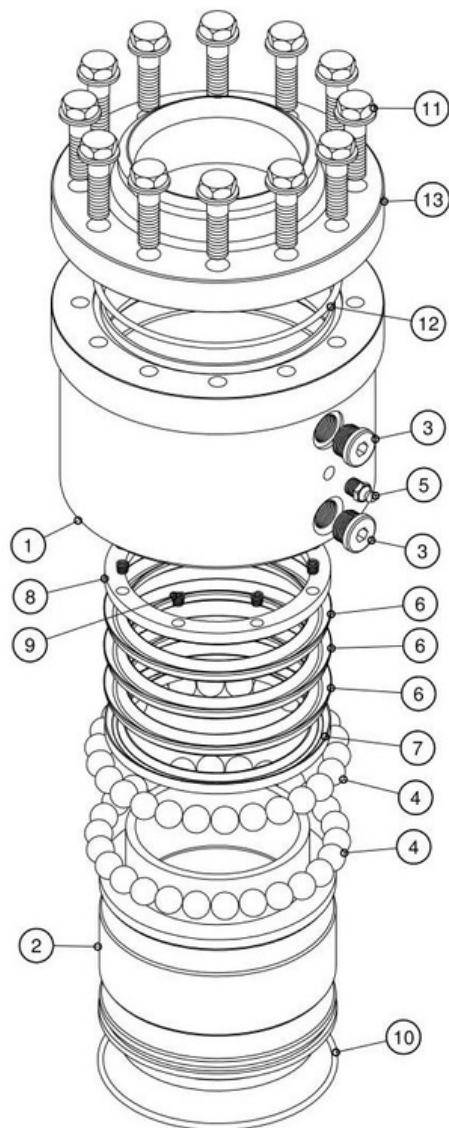


# Model 2174-HD Swivel Joint

## Carbon Steel Standard Construction

### Exploded View



### Assembled View



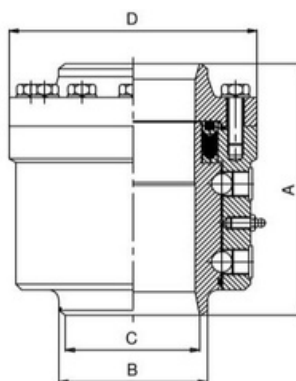
### Standard Features:

The Model 2174-HD heavy duty carbon steel Swivel Joint is a 3 piece design with hardened and ground raceways. It has triple "V" ring seals and a high loading capacity which makes it suitable for unsupported arms. The construction of this Swivel allows for easy packing seal replacing and swivelling motion.

### Part List

Item	Description	Quantity	Material
1	Body	1	Carbon Steel
2	Sleeve	1	Carbon Steel
3	Ball Plugs	2	AISI 303
4	Balls		Carbon Steel
5	Grease Nipple	1	Carbon Steel
6	"V" Ring Seals	3	BUNA N / VITON
7	Female Adapter	1	Bronze / Aluminium
8	Spring Adapter	1	Bronze / Aluminium
9	Springs		INOX
10	Grease O'Ring	1	BUNA N / VITON
11	Locking Screws		Carbon Steel
12	Body O'Ring	1	BUNA N / VITON
13	Body Flange	1	Carbon Steel

### Primary Dimensions



Size	A	B	C	D	Kg	Design Pressure
2"	129	60.3	51	118	5.4	50 Bar G
3"	168.5	88.9	78	154	12	50 Bar G
4"	193.5	114.3	102	190	20	50 Bar G
6"	245.5	169	152	271	50	50 Bar G