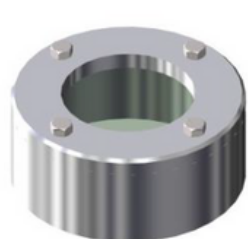


Sight Glass / Drip buckets / Locking Devices / Spring Balancing Cylinder

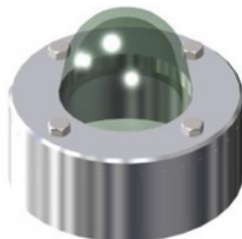
Model 2424 Sight Glass

The sight glass can be welded near the loading valve (or check valve) inlet, to verify that the arm is in wet condition.

Material: Polycarbonate with aluminium or steel body



Model 2424
with flat glass



Model 2424
with domed glass

Model 2410 Drip Buckets

The drip bucket is applied at the end of the drop tube when the loading is completed, to avoid fluid dripping. It is available with nipper (2408) or with hooks (2410).



Model 2410
with hooks



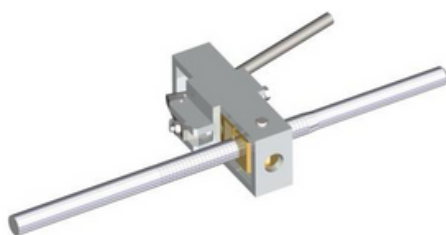
Model 2424
with nipper

Locking Device Arm in working position

The locking devices for arm in working position are installed on Top Loading Arms to keep the arm with the drop tube constantly lowered inserted into the manhole. They counteract the upward reaction of the pressure of the product while it is loaded into the tank. These systems are particularly suitable for installation on Loading Arms where there is no pneumatic system, with which you can realize a different system with continuous pneumatic pressure on the manhole. They provide pressure on the manhole, thus ensuring a continuous sealing, in order to have the best condition for vapour recovery.

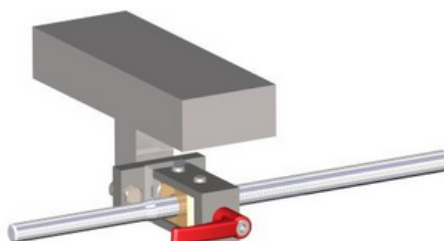
Model 2429

The Model 2429 is automatically activated by lowering the arm it prevents it from raising, but lets it to fall down. In order to raise the arm you have to unlock the device using the appropriate release lever.



Model 4942

The Model 4942 is manually operated through the control lever, which locks the arm in the required position by screwing in it. In order to release the device, unscrew the lever and release the arm.



Model 4659

The Model 4659 is installed along the primary arm and is composed by a carriage with a sliding counterweight on rails, which is moved by the operator when the arm is in the loading position to ensure the pressure of the cone on the manhole of the tank. This device is also equipped with safety locking device at the two ends for the carriage.



Model 05182 Spring Balancing Cylinder

The Spring Balancing Cylinder is the standard balancing unit installed on Loading Arms. It can keep the arm balanced with variation of the vertical angle of 100° and more (e.g. +80°/-20° horizontally, depending on the Loading Arm model). This reliable unit is designed with particular care to operator's safety. It is fitted with compression springs, closed into a cylindrical box, that can be selected according to the weight to be balanced and the required vertical working area. According to these requirements, the following models are available.

- (L) - Low
- (M) - Medium
- (S) - Strong
- (XS) - Extra Strong.

This is a maintenance-free unit and the compression springs are not replaceable because they are strongly compressed. However, spring tension regulation and working angle adjustments are possible.

