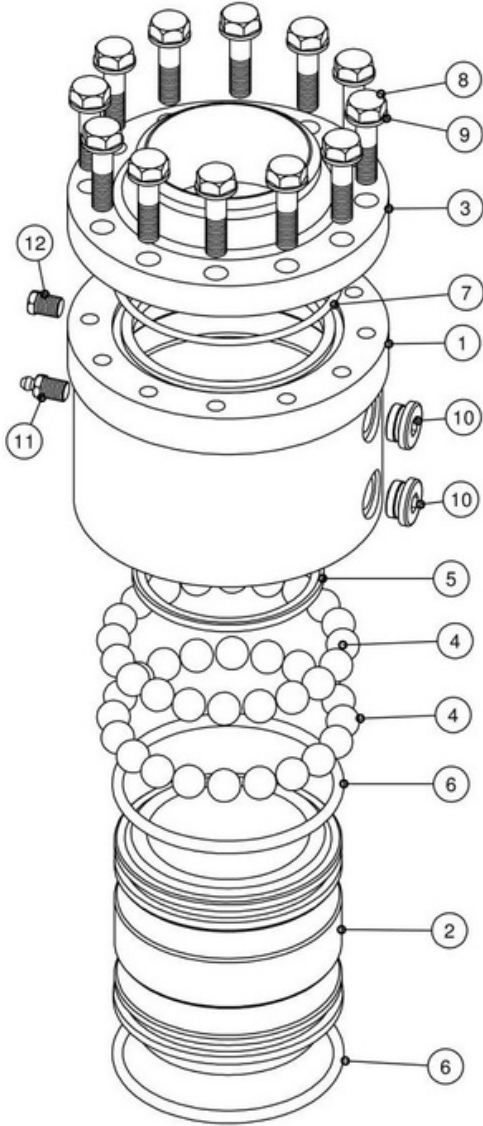


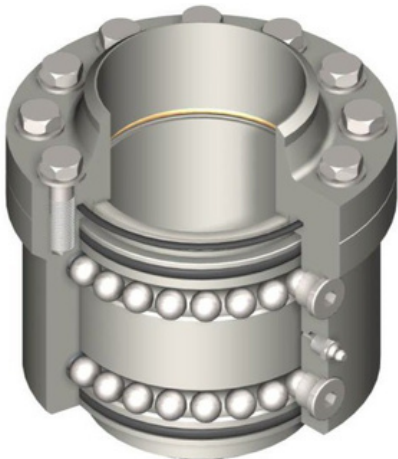
# Model 2833-HD Swivel Joint

Heavy Duty Carbon Steel Construction

## Exploded View



## Assembled View



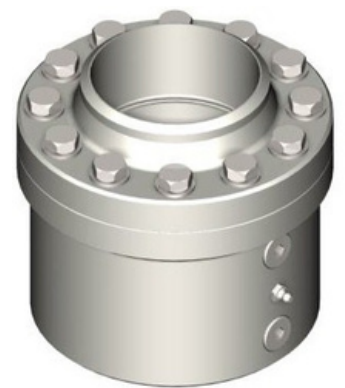
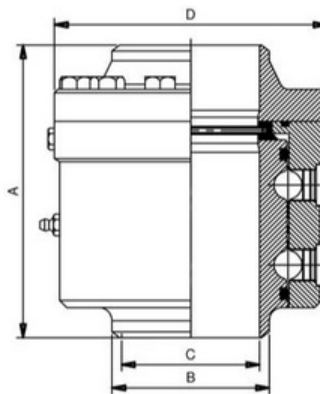
## Standard Features:

The Model 2833 Heavy Carbon Steel Swivel Joint is a 3 piece design with PTFE® energised seal and easy seal replacement. It has hardened and ground raceways which allows for high loading capacity needed for unsupported pipework. It has an AISI 309 sealing surface and is constructed for easy swivelling.

## Part List

Item	Description	Quantity	Material
1	Body	1	Carbon Steel
2	Sleeve	1	Carbon Steel
3	Body Flange	1	Carbon Steel
4	Balls		Carbon Steel
5	Energised Seals	1	PTFE filled + ELGILOY®
6	Grease O'Ring	2	BUNA N / VITON
7	Flange O'Ring	1	BUNA N / VITON
8	Flange Screws		Carbon Steel
9	Washers		Carbon Steel
10	Ball Plugs	2	AISI 303
11	Grease Nipple	1	Carbon Steel
12	Leak Detector Plug	1	AISI 304

## Primary Dimensions



Size	A	B	C	D	Kg	Design Pressure
2"	129	60.3	52	118	6	50 Bar G
3"	165	88.9	78	154	12	50 Bar G
4"	187.5	114.3	102	190	20.3	50 Bar G
6"	232	168.3	152	269	50	50 Bar G