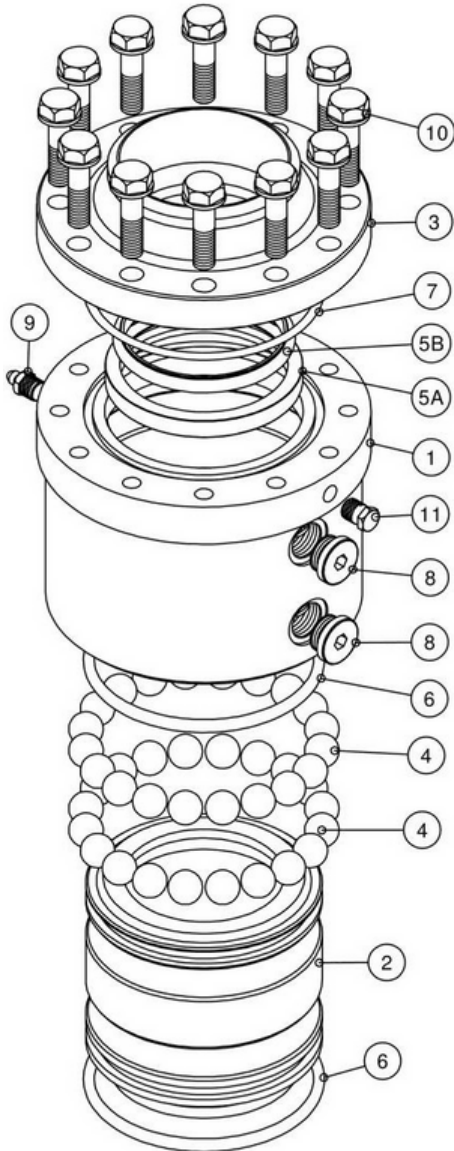


# Model 2833/HD-C Swivel Joint

Heavy Duty Carbon Steel Construction

## Exploded View



## Assembled View



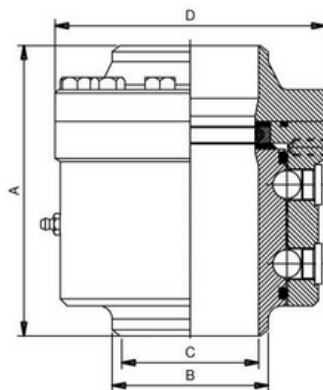
## Standard Features:

The Model 2833-HD-C is a 3 piece design with hardened and ground raceways. It has a primary seal "C" profile with a high loading capacity which is suitable for unsupported pipework. It is manufactured for easy swivelling and seal replacement.

## Part List

Item	Description	Quantity	Material
1	Body	1	Carbon Steel
2	Sleeve	1	Carbon Steel
3	Body Flange	1	Carbon Steel
4	Balls		Carbon Steel
5A	Primary Seal	1	VITON / BUNA N / KALREZ
5B	Primary Seal Internal Ring	1	Alu.Alloy / S.S
6	Grease O'Ring	2	BUNA N / VITON
7	Flange O'Ring	1	BUNA N / VITON
8	Ball Plugs	2	AISI 303
9	Grease Nipple	1	Carbon Steel
10	Flange Screws / Washers		Carbon Steel
11	Leak Detector Plug	1	AISI 304

## Primary Dimensions



Size	A	B	C	D	Kg	Design Pressure
2"	129	60.3	52	118	6	50 Bar G
3"	165.5	88.9	78	154	12	50 Bar G
4"	192.6	114.3	102	190	20.3	50 Bar G