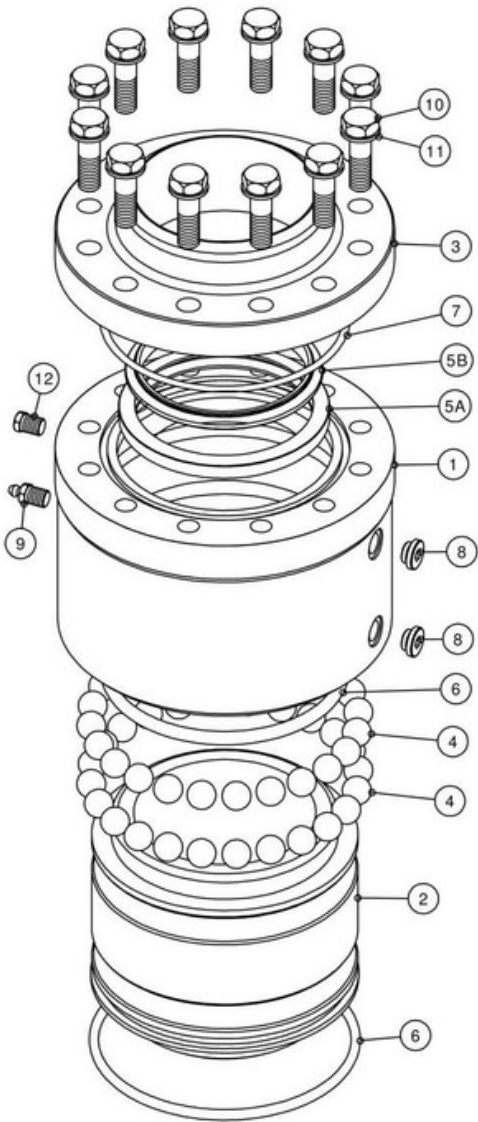


Model 2815-HD/C Swivel Joint

Carbon Steel / AISI 316L Standard Construction

Exploded View



Assembled View



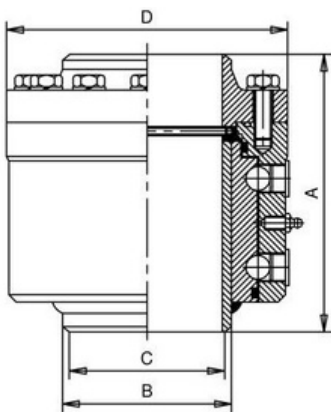
Standard Features:

The Model 2815-HD/C is a 3 piece design with hardened and ground raceways. It has a primary seal "C" profile with a high loading capacity which is suitable for unsupported pipework. The inner and sealing surface is constructed in AISI 316L and it is manufactured for easy swivelling and seal replacement.

Part List

| Item | Description | Quantity | Material |
|------|----------------------------|----------|---------------------------|
| 1 | Body | 1 | Carbon Steel |
| 2 | Sleeve | 1 | Carbon Steel / AISI 316-L |
| 3 | Body Flange | 1 | AISI 316-L |
| 4 | Balls | | Carbon Steel |
| 5A | Primary Seal | 1 | VITON / BUNA N / KALREZ |
| 5B | Primary Seal Internal Ring | 1 | Alu. Alloy / S.S. |
| 6 | Grease O'Ring | 2 | BUNA N / VITON |
| 7 | Flange O'Ring | 1 | BUNA N / VITON |
| 8 | Ball Plugs | 2 | AISI 303 |
| 9 | Grease Nipple | 1 | Carbon Steel |
| 10 | Flange Screws | | Carbon Steel |
| 11 | Washers | | Carbon Steel |
| 12 | Leak Detector Plug | 1 | AISI 304 |

Primary Dimensions



| Size | A | B | C | D | Kg | Design Pressure |
|------|-------|-------|-----|-----|------|-----------------|
| 2" | 129 | 60.3 | 52 | 118 | 6 | 50 Bar G |
| 3" | 170.3 | 88.9 | 78 | 154 | 12 | 50 Bar G |
| 4" | 194.6 | 114.3 | 102 | 190 | 20.3 | 50 Bar G |