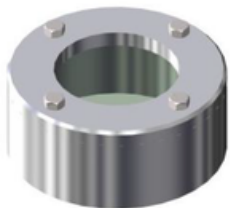


Sight Glass / Drip Buckets / Locking Devices / Spring Balancing Cylinder

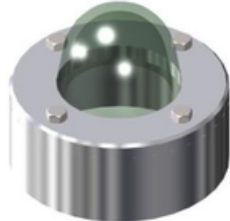
Model 2424 Sight Glass

The sight glass can be welded near the loading valve (or check valve) inlet to verify that the arm is in a wet condition.

Material: Polycarbonate with an aluminium or steel body



Model 2424
with flat glass



Model 2424
with domed glass



Model 2410
with hooks



Model 2408
with nipper

Locking Device Arm in working position

The locking devices for arms in the working position are installed on Top Loading Arms to keep the arm with the drop tube securely lowered and inserted into the manhole. These devices counteract the upward force exerted by the pressure of the product being loaded into the tank. They are especially suitable for Loading Arms without a pneumatic system, where an alternative system with continuous pneumatic pressure on the manhole could be used. These devices ensure continuous sealing by applying pressure to the manhole, providing optimal conditions for vapour recovery.

Model 2429

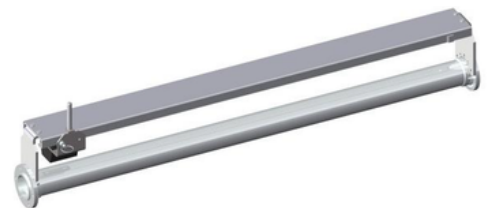
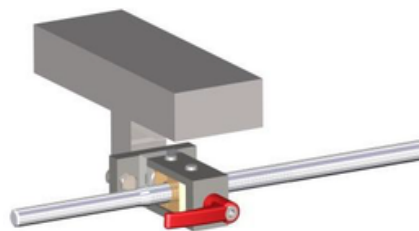
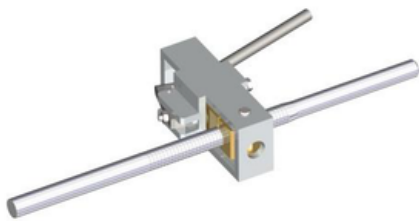
The Model 2429 is automatically activated when the arm is lowered, preventing it from raising but allowing it to fall down. To raise the arm, you need to unlock the device using the appropriate release lever.

Model 4942

The Model 4942 is manually operated via a control lever, which locks the arm in the desired position by screwing it in. To release the device, simply unscrew the lever and allow the arm to move freely

Model 4659

The Model 4659 is installed along the primary arm and features a carriage with a sliding counterweight on rails. The operator moves the counterweight when the arm is in the loading position to maintain pressure of the cone on the tank's manhole. This device also includes safety locking mechanisms at both ends of the carriage.



Model 05182 Spring Balancing Cylinder

The Spring Balancing Cylinder is the standard balancing unit installed on Loading Arms. It maintains the arm's balance across a vertical angle variation of 100° or more (e.g., +80°/-20° horizontally, depending on the Loading Arm model). This reliable unit prioritises operator safety and features compression springs enclosed within a cylindrical box. The springs are chosen based on the weight to be balanced and the required vertical working area. Available models include:

- (L) - Low
- (M) - Medium
- (S) - Strong
- (XS) - Extra Strong

The unit is maintenance-free, with non-replaceable compression springs due to their high compression. However, spring tension regulation and working angle adjustments are possible.

