

Storage Tank and Reservoir Equipment

Model 2302 Double Range Floating Suction Unit

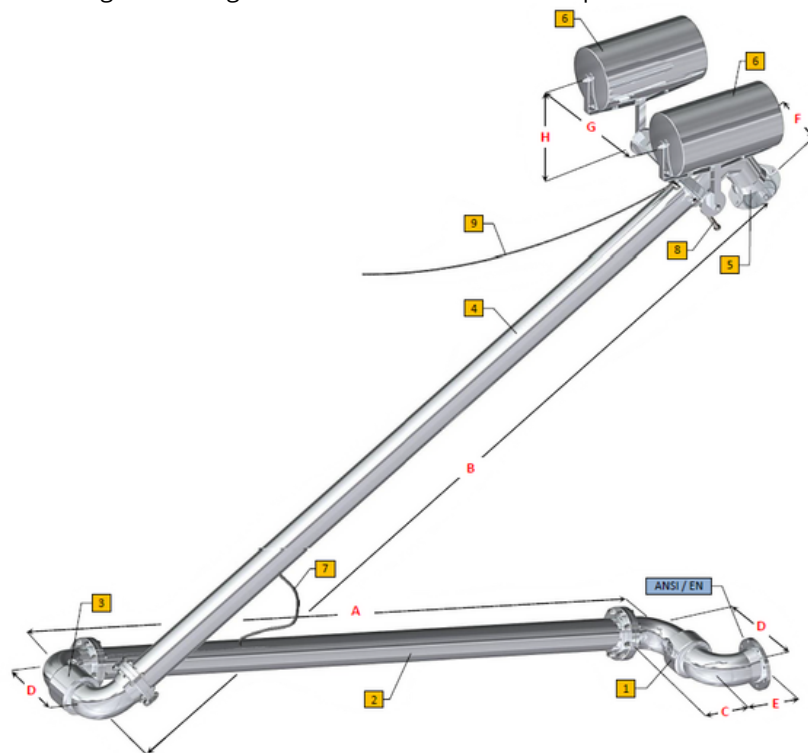
Standard Features:

The Model 2302 Floating Suction Unit operates within vertical storage tanks where the height is greater than its width. Like the Model 2249 Floating Suction Unit, the Model 2302 is designed to suck the clean product just below the product surface. This will prevent the contamination of the product from the sediments which settle on the top of the tank. The correct position of the Floating Suction Unit level is guaranteed by the presence of floats, properly sized according to the weight of the arm and of the stored product.

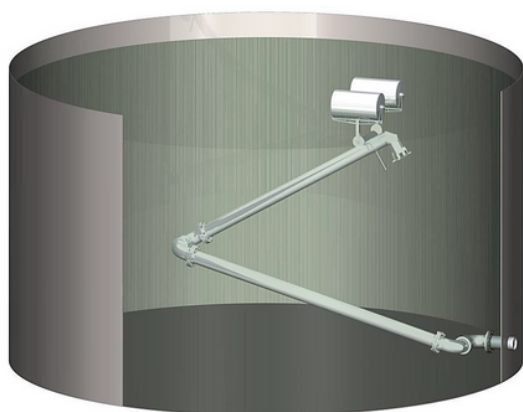
Operating Conditions

Seal Material VITON
Flow Rate 1.5 m/s

N.	Description	Dwg/Mod
1	Swivel Joint	4044-2175/SS
2	Primary Swing Joint Tube	-
3	Swivel Joint	4044-2175/SS
4	Secondary Swing Joint Tube	-
5	Final Elbow with Baffle Plate	-
6	Floats	-
7	Restraining Cable	-
8	Support Foot	-
9	Inspection Rope	-



Demonstration of Vertical Working



Notes:

- AISI 316-L 2175/SS swivel joints suitable with stainless steel floating units
- Aluminium Alloy 4044 swivel joints suitable with Aluminium floating units
- (*) Demonstrative dimensions
- (**) "A" and "B" dimensions are calculated according to tank height
- The Model 2302 floating suction unit can be fitted into storage tanks with a floating roof. For this application, a support system with carriage and rails is to be provided instead of floats.

Size	A	B	C	D	E	F*	G*	H*
2"	**	**	91	257	91	500	800	800
3"	**	**	129	363	129	500	800	800
4"	**	**	125	375	125	500	800	800
6"	**	**	190	513	190	500	800	800
8"	**	**	210	547	210	500	800	800
10"	**	**	226	634	226	500	800	800
12"	**	**	375	884	375	500	800	800