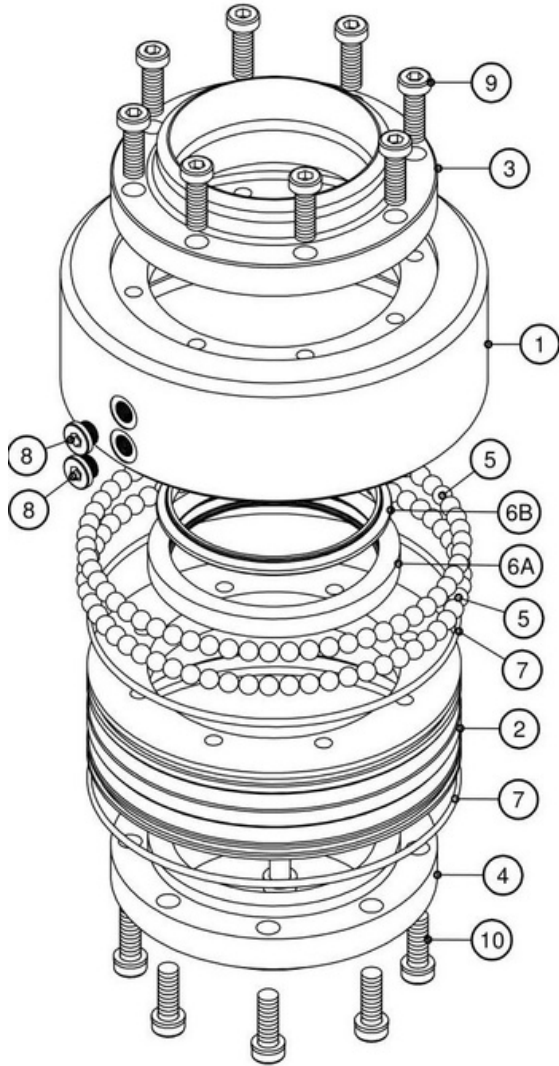


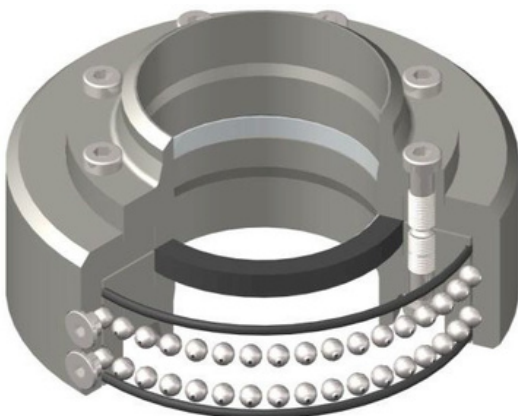
Model 3996-WN Swivel Joint

Carbon Steel Construction

Exploded View



Assembled View



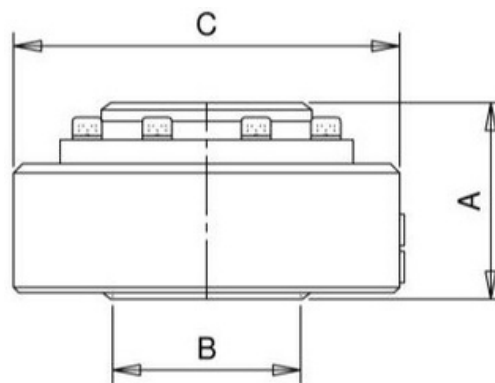
Standard Features:

The Model 3996-WN with butt weld flanges is a 4 piece design with hardened and ground raceways with a reduced height which makes it suitable for bottom unloading. It has a primary seal "C" profile. The design allows for a quick Swivel Joint replacement and easy swivelling/seal replacement.

Part List

| Item | Description | Quantity | Material |
|------|----------------------------|----------|----------------|
| 1 | Flanged Female | 1 | Carbon Steel |
| 2 | Flanged Sleeve | 1 | Carbon Steel |
| 3 | Female Flange | 1 | Carbon Steel |
| 4 | Sleeve Flange | 1 | Carbon Steel |
| 5 | Balls | | Carbon Steel |
| 6A | Primary Seal | 1 | VITON |
| 6B | Primary Seal Internal Ring | 1 | Alu. Alloy |
| 7 | Grease O'Ring | 2 | BUNA N / VITON |
| 8 | Ball Plugs | 2 | AISI 303 |
| 9 | Flange Screws | 8 | Carbon Steel |
| 10 | Flange Screws | 8 | Carbon Steel |

Primary Dimensions



| Size | A | B | C | Kg | Design Pressure |
|------|-----|-----|-----|------|-----------------|
| 3" | 93 | 78 | 186 | 8 | 10 Bar G |
| 4" | 106 | 102 | 208 | 13.7 | 10 Bar G |