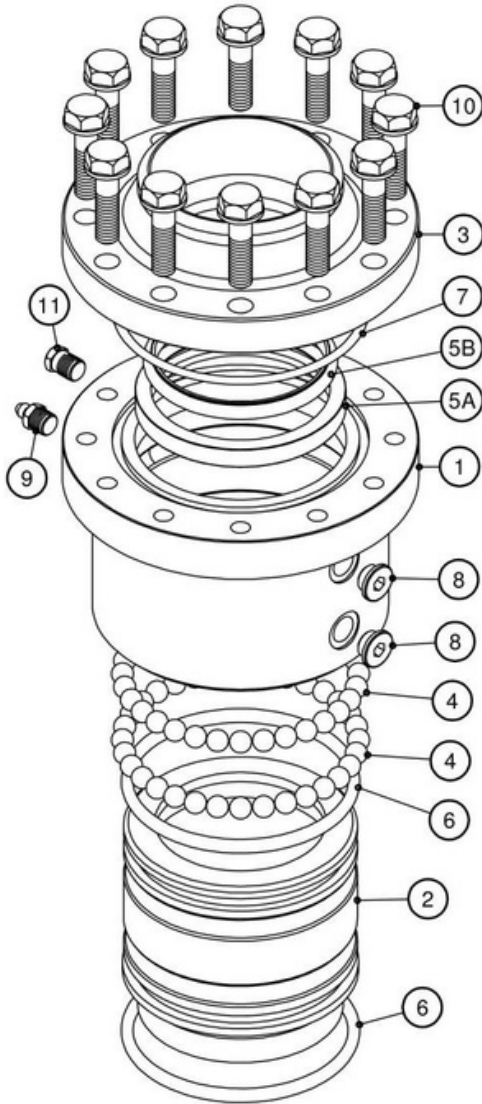


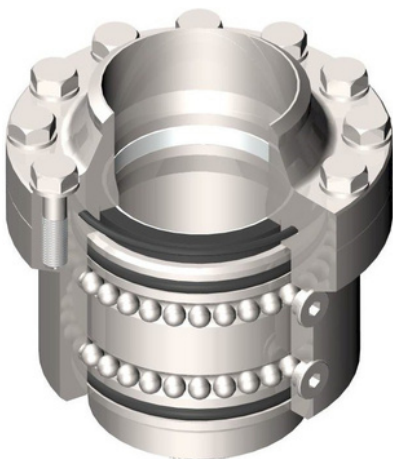
# Model 2833/C Swivel Joint

## Carbon Steel Standard Construction

### Exploded View



### Assembled View



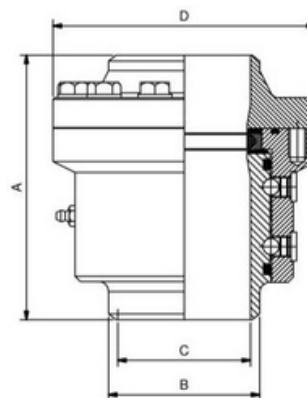
### Standard Features:

The Model 2833-C is a 3 piece design with hardened and ground raceways. It has an AISI 309 sealing surface with a primary seal "C" profile. Other characteristics include the high loading capacity it has and the easy swivelling and seal replacement.

### Part List

Item	Description	Quantity	Material
1	Body	1	Carbon Steel
2	Sleeve	1	Carbon Steel
3	Body Flange	1	Carbon Steel
4	Balls		Carbon Steel
5A	Primary Seal	1	VITON / BUNA N / KALREZ
5B	Primary Seal Internal Ring	1	Alu. Alloy / S.S.
6	Grease O'Ring	2	BUNA N / VITON
7	Flange O'Ring	1	BUNA N / VITON
8	Ball Plugs	2	AISI 303
9	Grease Nipple	1	Carbon Steel
10	Flange Screws / Washers		Carbon Steel
11	Leak Detector Plug	1	AISI 304

### Primary Dimensions



Size	A	B	C	D	Kg	Design Pressure
2"	129	60.3	52	118	5.1	40 Bar G
3"	155.5	88.9	78	154	8.8	40 Bar G
4"	168	114.3	102	190	14.2	40 Bar G