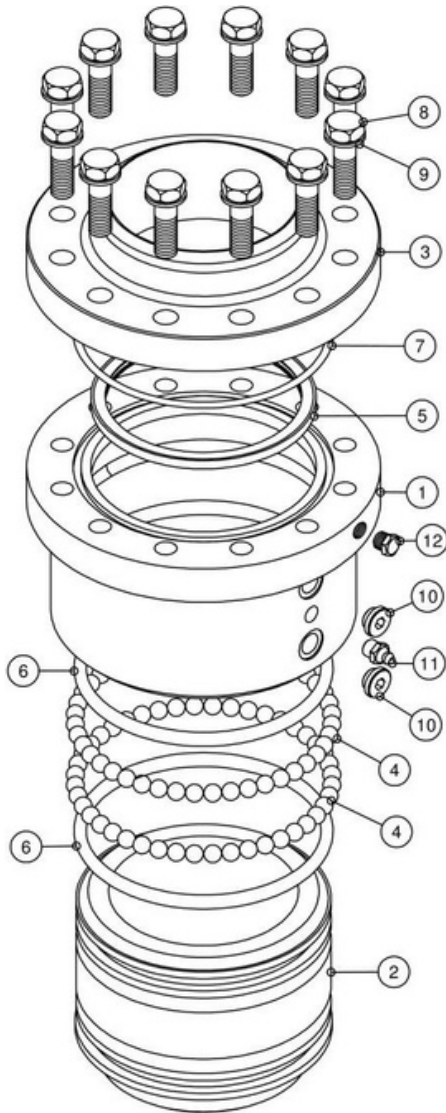


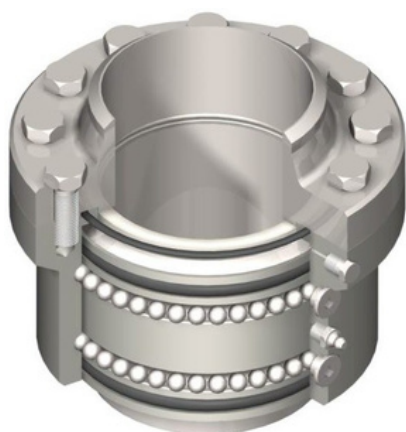
Model 2815 Swivel Joint

Carbon Steel / AISI 316L Standard Construction

Exploded View



Assembled View



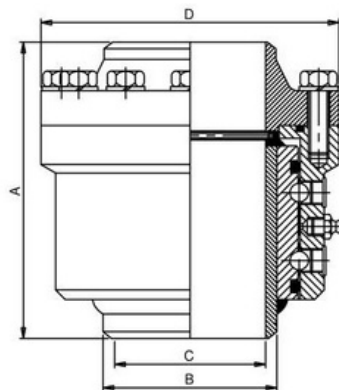
Standard Features:

The Model 2815 Carbon Steel / AISI 316L swivel joint is a 3 piece design with hardened and ground raceways. It has PTFE® energised seals with an AISI 316L inner and sealing surface. It has a high loading capacity with easy swivelling and seal replacement.

Part List

Item	Description	Quantity	Material
1	Body	1	Carbon Steel
2	Sleeve	1	Carbon Steel / AISI 316L
3	Body Flange	1	AISI 316L
4	Balls		Carbon Steel
5	Energised Seals	1	PTFE filled + ELGILOY®
6	Grease O'Ring	2	BUNA N / VITON
7	Flange O'Ring	1	BUNA N / VITON
8	Flange Screws		Carbon Steel
9	Washers		Carbon Steel
10	Ball Plugs	2	AISI 303
11	Grease Nipple	1	Carbon Steel
12	Leak Detector Plug	1	AISI 304

Primary Dimensions



Size	A	B	C	D	Kg	Design Pressure
1.5"	126	48.3	41	106	4.7	40 Bar G
2"	129	60.3	52	118	5.7	40 Bar G
3"	152.5	88.9	78	154	10.3	40 Bar G
4"	166	114.3	102	190	15.2	40 Bar G
6"	215	168.3	152	240	37	25 Bar G

Notes: PTFE® energised seal FDA approved on request