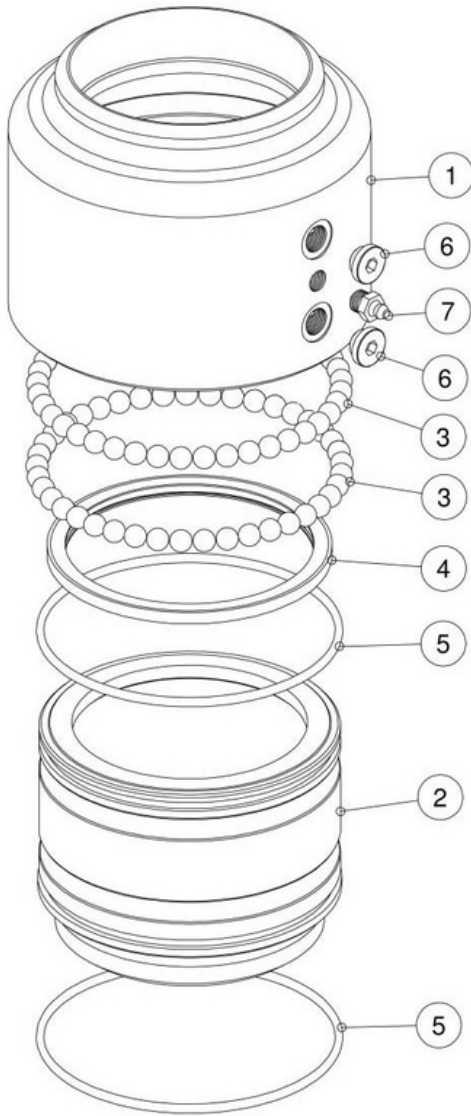


Model 2175 Swivel Joint

Carbon Steel Standard Construction

Exploded View



Assembled View



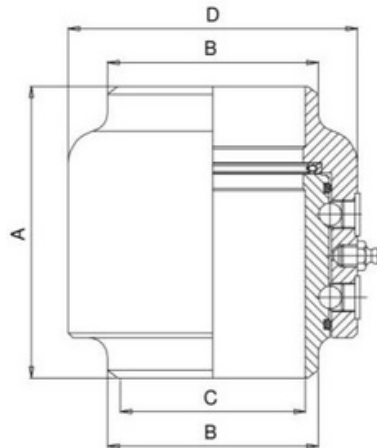
Standard Features:

The Model 2175 carbon steel Swivel Joint is a 2 piece design with hardened and ground raceways. It has a PTFE® energised seal with a high loading capacity. The design allows for an easy swivelling motion.

Part List

Item	Description	Quantity	Material
1	Body	1	Carbon Steel
2	Sleeve	1	Carbon Steel
3	Balls		Carbon Steel
4	Energised Seal	1	PTFE filled + ELGILOY®
5	Grease O'Ring	2	Carbon Steel
6	Ball Plugs	2	AISI 303
7	Grease Nipple	1	Carbon Steel

Primary Dimensions



Size	A	B	C	D	Kg	Design Pressure
3"	123	88.9	78	122	5	40 Bar G
4"	136	114.3	102	156	8.7	40 Bar G
5"	157	141.3	128	190	14.5	25 Bar G
6"	175	168.3	152	225	21	25 Bar G