

# API Coupler (API RP1004) for Liquid Phase with Check Valve

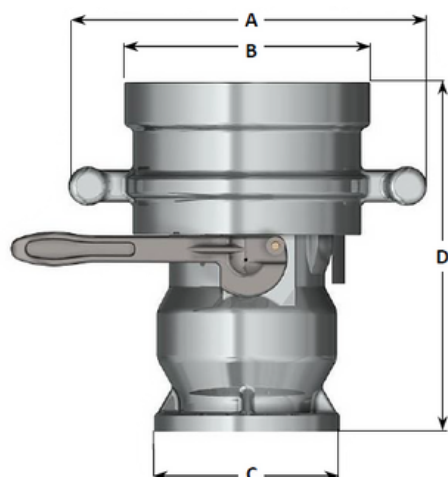
## Operating Conditions

Design Pressure 10.0 Bar G

Design Temperature -40°C / +65°C

Seal Material VITON  
Special VITON

Flow Rate 4"– 150 mc/h Max

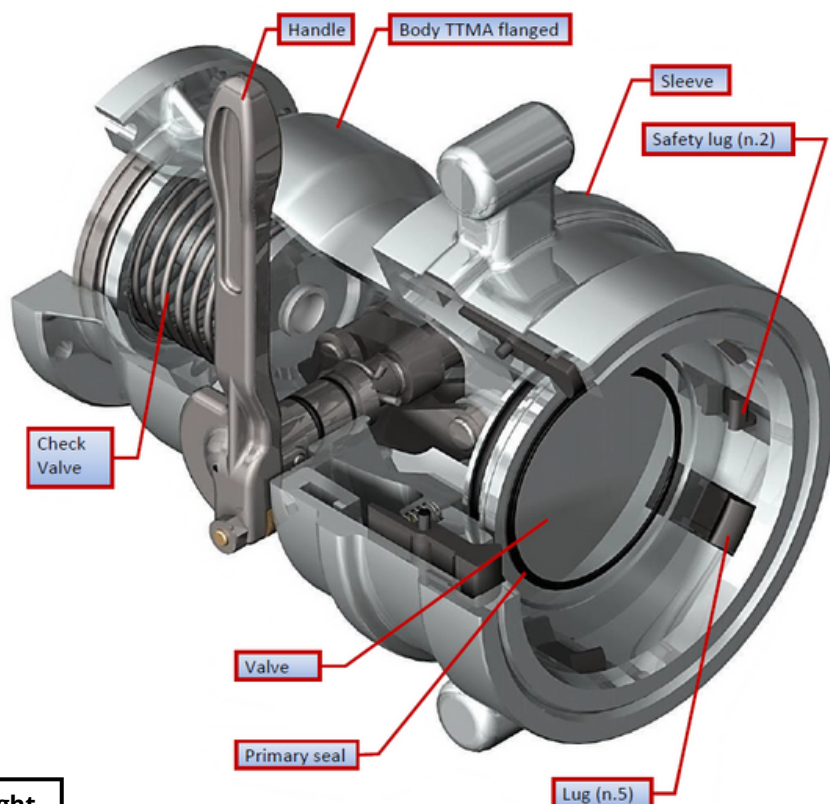


## Standard Dimensions

Dn.	A	B	C	D	Weight
4"	327	225	T.T.M.A ø170	322	12.0 Kg

## Options:

- EEx-ia proximity switch to signal coupler correctly connected (see accessories).
- Parking position adapter (see accessories).
- Dust cup



## API Coupler in Closed Position



## API Coupler in Open Position

