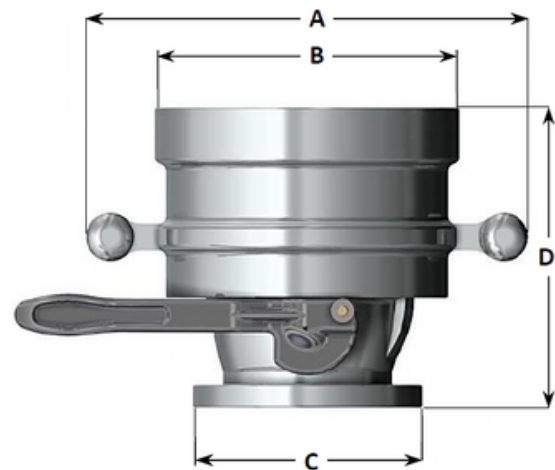


# API Coupler (API RP1004) for Liquid Phase

## Operating Conditions

Design Pressure	10.0 Bar G
Design Temperature	-40°C / +65°C
Seal Material	VITON Special VITON
Flow Rate	4"– 150 mc/h Max

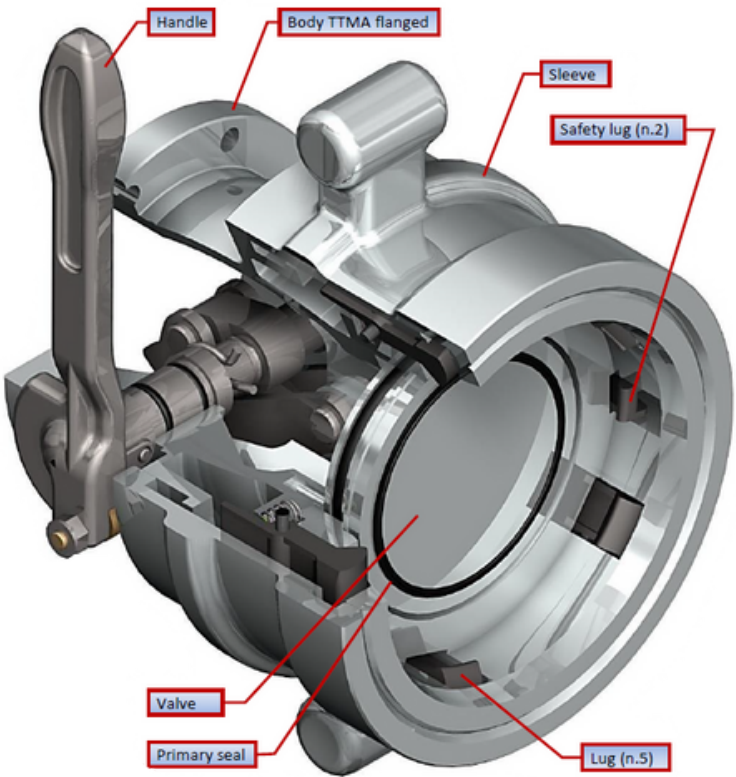


## Standard Dimensions

Dn.	A	B	C	D	Weight
4"	327	225	T.T.M.A ø170	224	10.0 Kg

## Options:

- EEx-ia proximity switch to signal coupler correctly connected (see accessories).
- Parking position adapter (see accessories).
- Dust cup



API Coupler in Closed Position

API Coupler in Open Position

