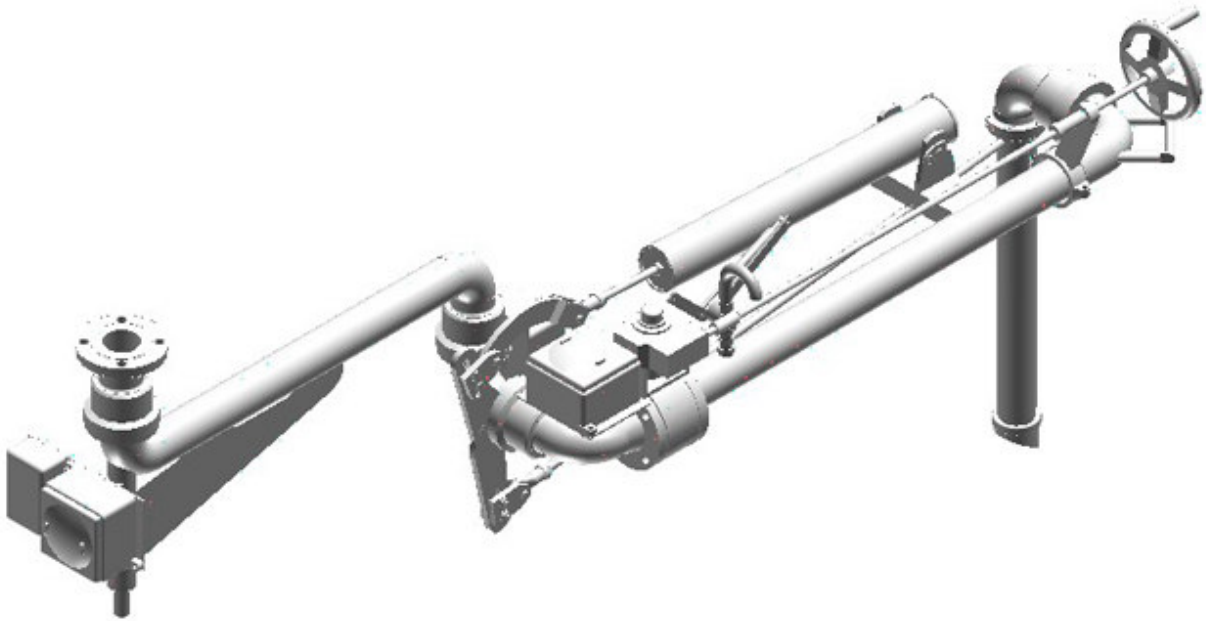


## Top Loading Arm Electric Heat Trace – Model Long Reach

The long reach arm gives the greatest reach of top loading arms for transferring hot fluids such as asphalt, sulphur and bitumen and consists of a horizontal boom assembly that gives a wide range of operation on both vertical and horizontal planes. This allows truck or railcar compartments to be loaded without moving the vehicle.

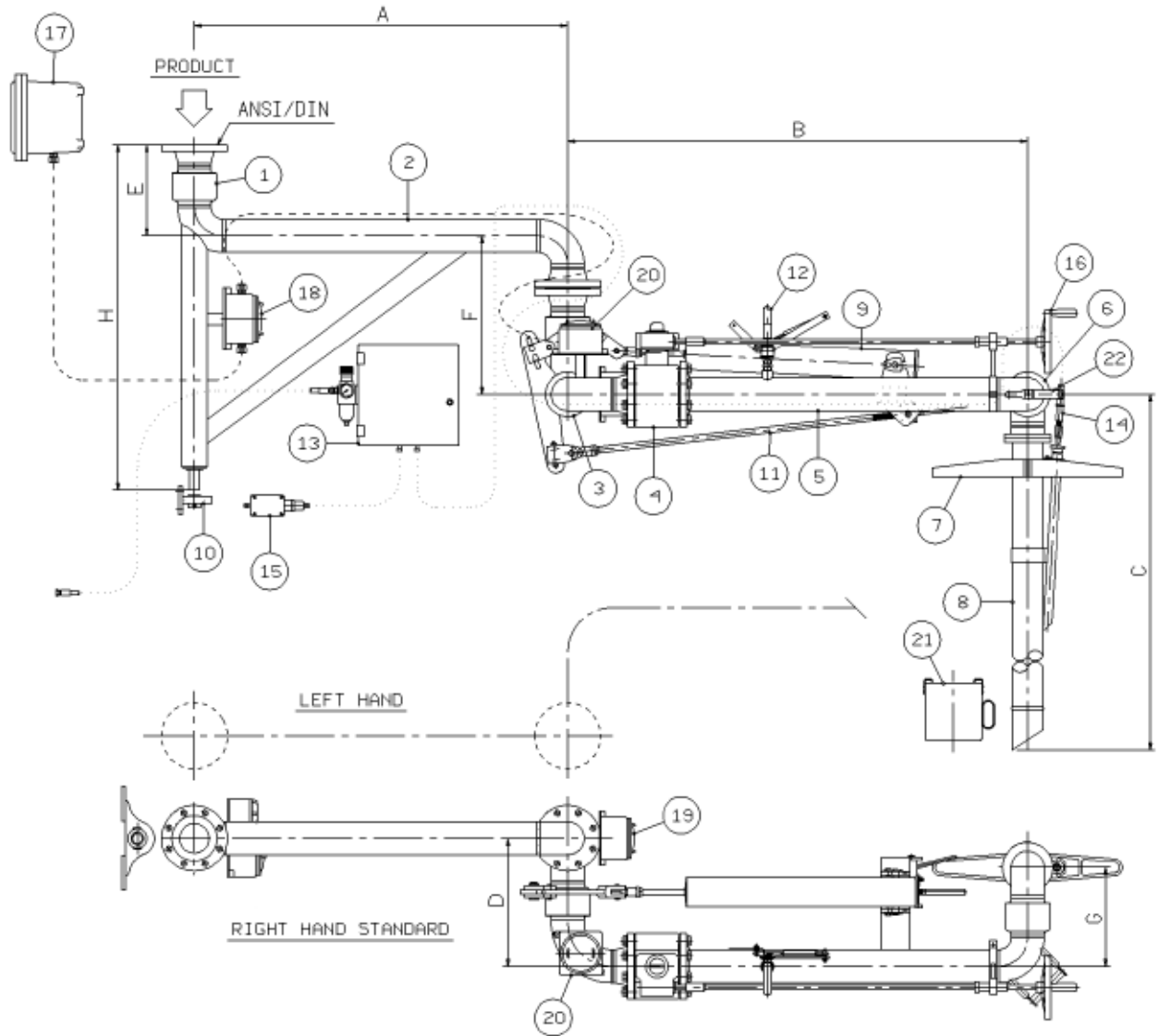
Arms for transferring hot fluids such as asphalt, sulphur and bitumen are available with either heating jackets and connection lines for steam, heating oil or alternatively by electrical tracing.

Loading Arms in various configurations are available for other products that require heating, includes foods and chemicals.



**Technical enquiry form available on request.**

## Top Loading Arm Electric Heat Trace – Model Long Reach



<b>Standard Dimensions</b>			
<b>Size</b>	<b>3" x 2"</b>	<b>4" x 3"</b>	<b>6" x 4"</b>
<b>A</b>	1000 to 1500 mm	1000 to 1500 mm	1000 to 1500 mm
<b>B</b>	1500 to 2000 mm	1500 to 2000 mm	1500 to 2000 mm
<b>C</b>	1200 to 1600 mm	1200 to 1600 mm	1200 to 1600 mm
<b>D</b>	355 mm	445 mm	637 mm
<b>E</b>	273 mm	318 mm	421 mm
<b>F</b>	459 mm	548 mm	740 mm
<b>G</b>	279 mm	343 mm	484 mm
<b>H</b>	1000 mm	1000 mm	1000 mm
<b>Weight</b>	200 kg	230 kg	400 kg

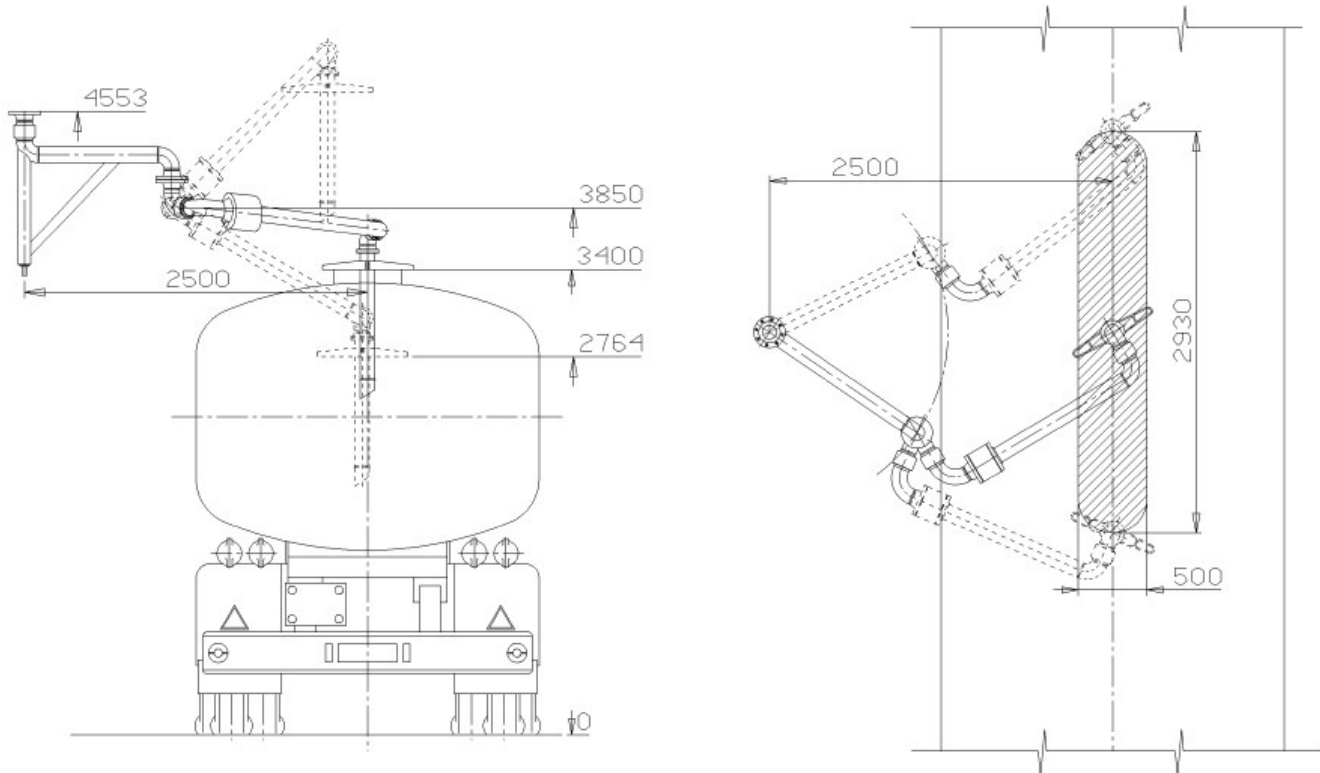
## Top Loading Arm Electric Heat Trace – Model Long Reach

### Parts List

Item	Description	Model Ref	Material
1	Swivel Joint – Style 30	2175	Carbon Steel
2	Boom Arm		Carbon Steel
3	Swivel Joint – Style 50	2175	Carbon Steel
4	Ball Valve – fires safe – full bore		Carbon Steel
5	Primary Arm – Jacketed		Carbon Steel
6	Swivel Joint – Style 40	2175	Carbon Steel
7	Positionable Spider	2796	Aluminium Alloy
8	Drop Pipe with standard deflector	2359-BF	Aluminium Alloy
9	Spring Balance Cylinder	05182	Carbon Steel
10	Pillow Block		Carbon Steel
11	Lock-Down Device	2429	Carbon Steel
12	¾" Self-Closing Vacuum Breaker	2878	
13	Air Logic Control		
14	Pneumatic Level Control		Aluminium Alloy
15	EEx-d Micro-switch		
16	Hand Wheel – valve remote operation		
17	EEx-d Converter (contractor connection)		
18	EEx-d Junction box heating cable		
19	EEx-d Junction box heating cable		
20	EEx-d Junction box heating cable		
21	Drip Bucket (hook on type)	2410	Aluminium Alloy
22	Operators Handle		Carbon Steel

## Top Loading Arm Electric Heat Trace – Model Long Reach

### Typical Operating Envelope



<b>Operating Conditions</b>	
<b>Fluid</b>	Bitumen / Sulphur
<b>Specific Gravity (S.G)</b>	-
<b>Design Pressure</b>	10.0 Bar G
<b>Test Pressure</b>	15.0 Bar G
<b>Design Temperature</b>	-15°C / +200°C

<b>Specification</b>	
<b>Seal Material</b>	Fluoroloy K
<b>Recommended Flow Rate</b>	3" = 35m <sup>3</sup> /hr max. 4" = 60m <sup>3</sup> /hr max. 6" = 125 m <sup>3</sup> /hr max.
<b>Standard Painting</b>	Sandblast SA 2½. Primer Epoxy.