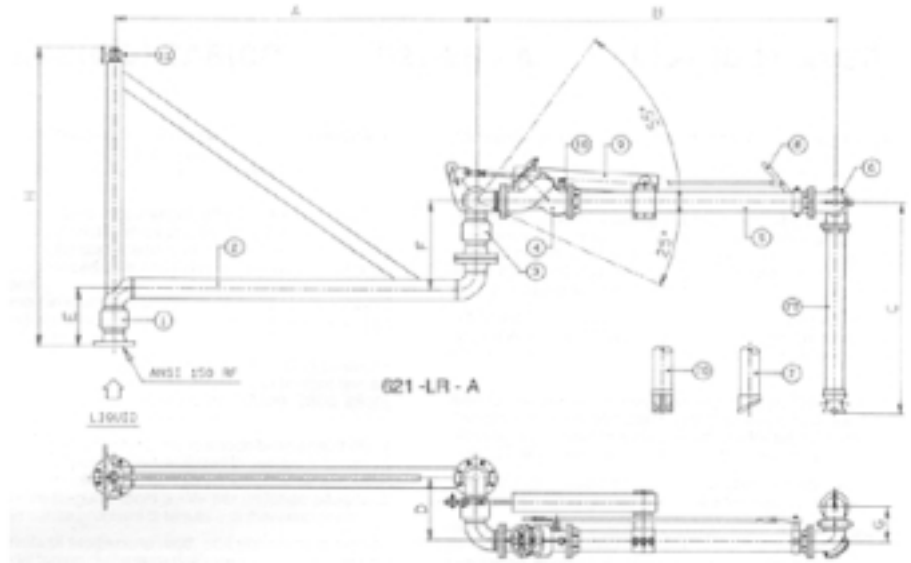


## Top Loading Arm – Long Reach

### Specification

Item	Description / Material
1	Base Swing Joint Carbon Steel
2	Boom Assembly Carbon Steel
3	Double Swing Joint Carbon Steel
4	Loading Valve Aluminium (Stay or Hold Open)
5	Primary Arm Aluminium
6	Drop Tube Swivel Aluminium
7	Drop Tube - Outlet 45°
7T	Drop Tube - Outlet Tee (Std)
7D	Drop Tube - Outlet Deflector Aluminium
8	Remote Control Carbon Steel / Aluminium
9	Balance – Spring Cylinder Carbon Steel
10	Vacuum Breaker – Automatic Ni – Plated Brass
11	Support – Pillow Block Carbon Steel



Standard Right Hand Version

Size : 3", 4" & 6"  
 Seal Material : Viton / Nitrile  
 Factory Balanced – Wet condition.

#### Standard Arm Dimensions

Size	3" Arm	4" Arm	6" Arm
Primary	A = 2500mm.	2500mm.	2500mm
Secondary	B = 2100mm.	2100mm.	2100mm
Drop Pipe	C = 1200mm.	1200mm.	1200mm
	D = 296mm.	353mm.	525mm
	E = 289mm.	328mm.	462mm
	F = 198mm.	255mm.	707mm

#### Operating Conditions

Design Temp : -15° / +65°C  
 Design Press : 10.5 Bar  
 Test Press : 16.0 Bar

#### Flow Rate

3" 75 mc/hr  
 4" 125 mc/hr

#### Unit Weight

3" 90 Kg  
 4" 115 Kg

### EW Fuel Management Ltd

27 Kneesworth Street, Royston, Hertfordshire,  
 SG8 5AB, England.  
 Tel : + 44 (0) 1763 248 650 Fax : +44 (0) 1763 248 970  
 Email : [sales@ewfm.co.uk](mailto:sales@ewfm.co.uk)  
 Website : [www.ewfm.co.uk](http://www.ewfm.co.uk)

### EWFM Inc.

201 Wild Berry Lane, Harvest, AL,  
 35749 USA.  
 Tel : 256 417 4315 Fax : 256 417 4322  
 Email : [sales@ewfuelmanagement.com](mailto:sales@ewfuelmanagement.com)  
 Website : [www.ewfuelmanagement.com](http://www.ewfuelmanagement.com)