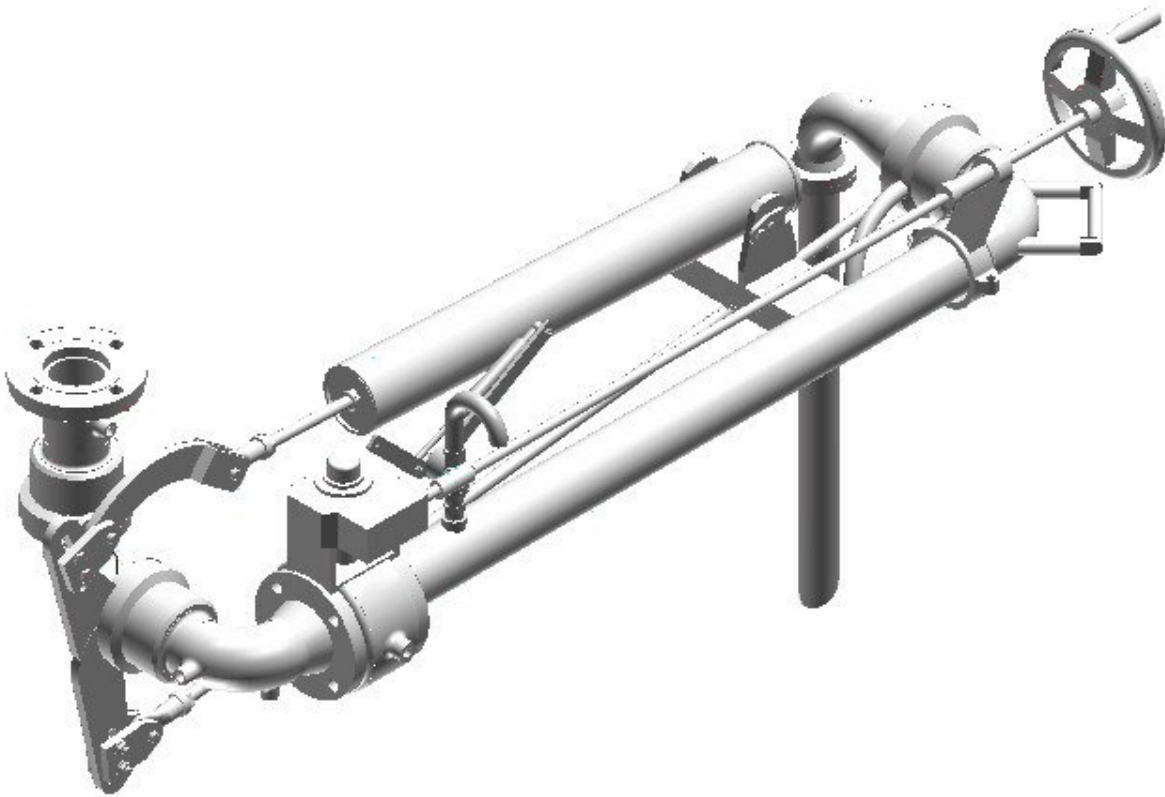


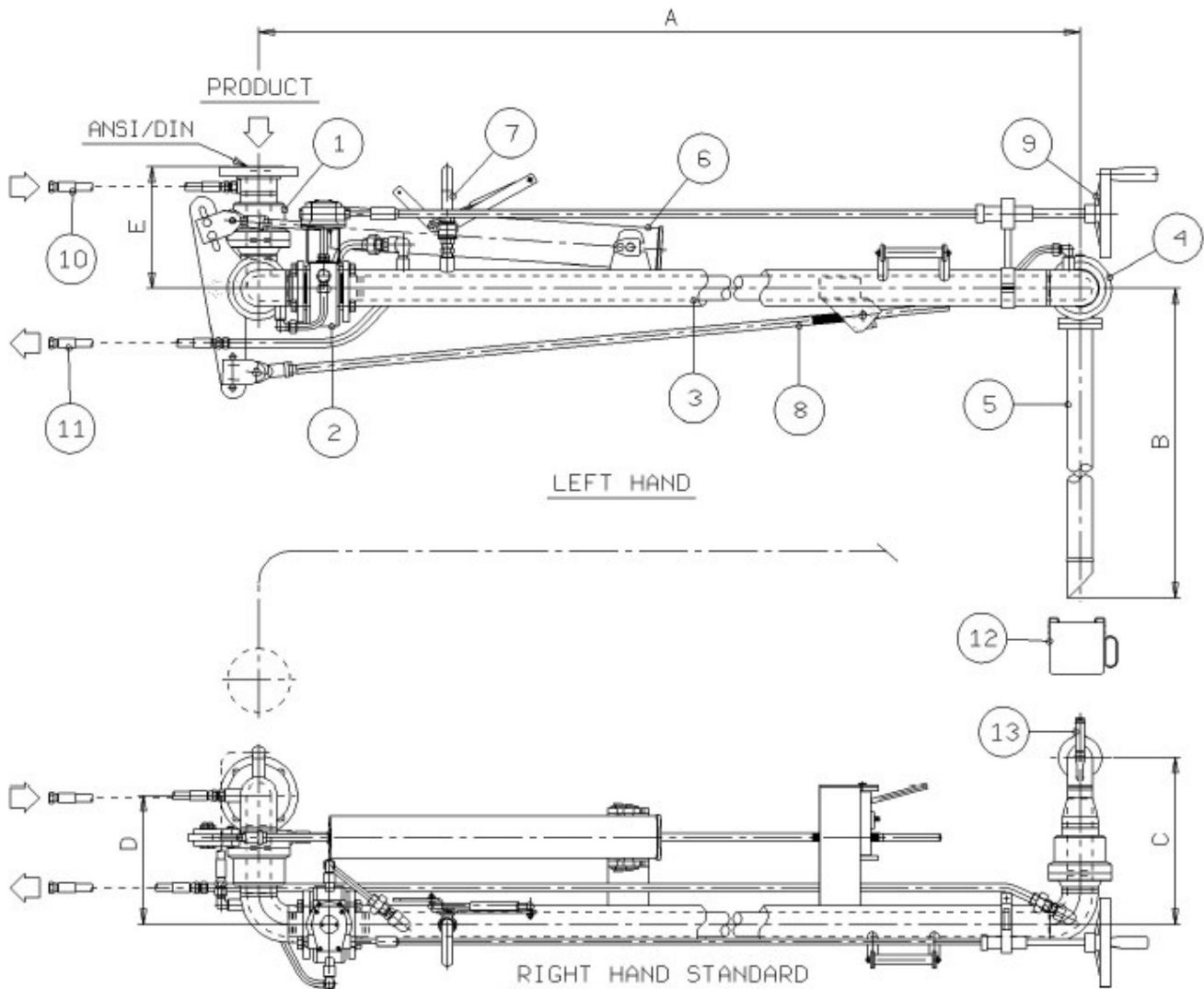
Top Loading Arm Jacketed – Model Fixed Reach

The fixed reach top loading arm is used for top loading rail cars and road tankers where single point manhole filling is required. Arms for transferring hot fluids such as asphalt, sulphur and bitumen are available with either heating jackets and connection lines for steam, heating oil or alternatively by electrical tracing. The jacketed arm is also available in long reach configuration where more than one fill point is necessary. Loading Arms in various configurations are available for other products that require heating, including foods and chemicals.



Technical enquiry form available on request.

Top Loading Arm Jacketed – Model Fixed Reach



Standard Dimensions			
Size	3" x 2"	4" x 3"	6" x 4"
A	2000 to 3000 mm	2000 to 3000 mm	2000 to 3000 mm
B	1200 to 1600 mm	1200 to 1600 mm	1200 to 1600 mm
C	404 mm	454 mm	524 mm
D	312 mm	375 mm	370 mm
E	295 mm	370 mm	480 mm
Weight	140 kg	190 kg	240 kg

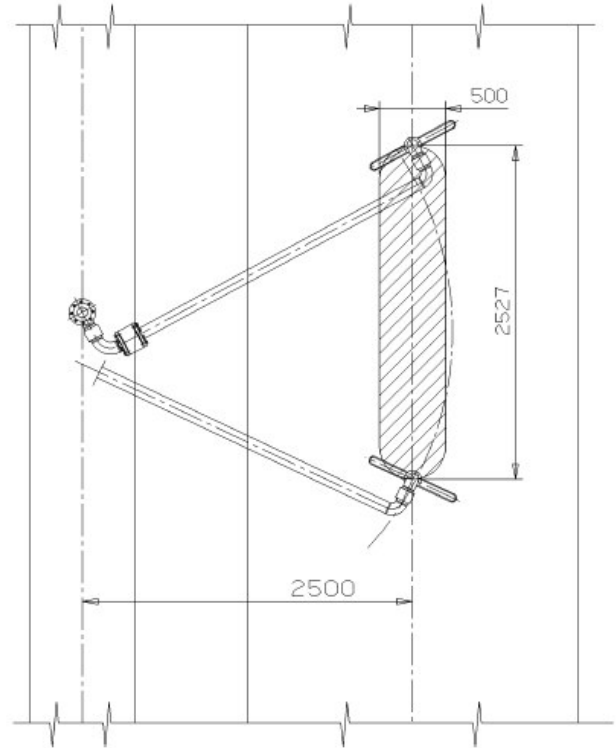
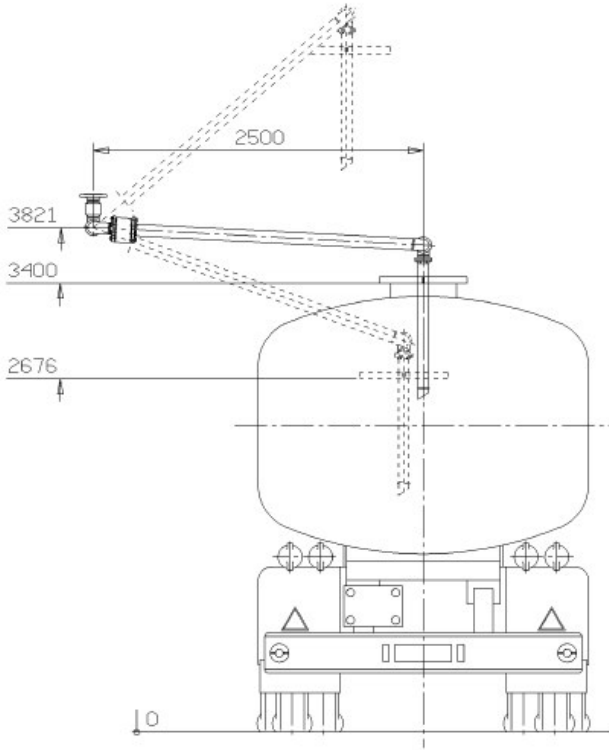
Top Loading Arm Jacketed – Model Fixed Reach

Parts List

Item	Description	Model Ref	Material
1	Swivel Joint – Jacketed – Style 50 (double swivel)	2833	Carbon Steel
2	Ball Valve – Jacketed – fires safe – full bore		Carbon Steel
3	Primary Arm – Jacketed		Carbon Steel
4	Swivel Joint – Jacketed – Style 40	2833	Carbon Steel
5	Drop Pipe with standard deflector	2359-BF	Aluminium Alloy
6	Spring Balance Cylinder	05182	Carbon Steel
7	¾" Self-Closing Vacuum Breaker	2878	
8	Lock-Down Device	2429	Carbon Steel
9	Hand Wheel – valve remote operation		
10	½" Steam Hose (inlet)		AISI 321/304
11	½" Steam Hose (outlet)		AISI 321/304
12	Drip Bucket (hook on type).	2410	Aluminium Alloy
13	Operators Handle		Carbon Steel

Top Loading Arm Jacketed – Model Fixed Reach

Typical Operating Envelope



Operating Conditions	
Fluid	Bitumen / Sulphur
Specific Gravity (S.G)	-
Design Pressure	10.0 Bar G
Test Pressure	15.0 Bar G
Design Temperature	-15°C / +200°C

Specification	
Seal Material	Fluoroloy K
Recommended Flow Rate	3" x 2" = 20m ³ /hr max. 4" x 3" = 35m ³ /hr max. 6" x 4" = 60 m ³ /hr max.
Standard Painting	Sandblast SA 2½. Primer Epoxy.